

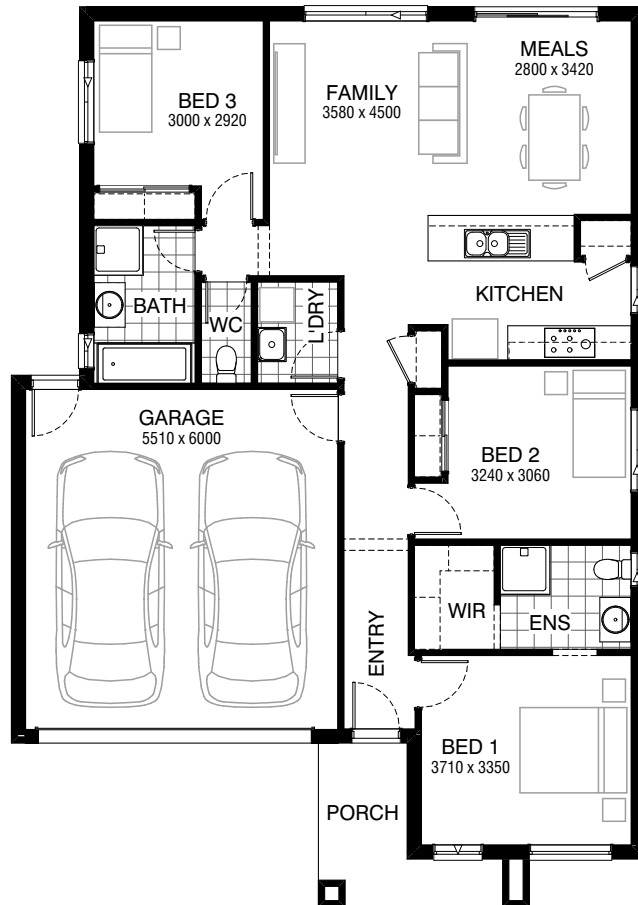


Total squares **16.3sq**

 **3**  **2**  **2**



FLOORPLAN OPTIONS

All available ready-to-go floorplan options for this design can be viewed on the following pages, or visit www.burbank.com.au.

Facades available:

Drysdale, Arkley, Dowd, Haring

Nolan, Alpine, Woodland

Overall home width 11.15m

Overall home length 15.83m

Residence 109.1m² 11.7sq

Garage 36.1m² 3.9sq

Porch 6.3m² 0.7sq

Total 151.5m² 16.3sq

Listed details based on Drysdale façade floorplan (illustrated)

*Copyright conditions. All photos and illustrations are representative only. Floor plans and specifications may be varied by Burbank without notice, the dimensions are diagrammatic only and a Building Contract with final drawings will display correct dimensions and detail. All designs are the property of Burbank and must not be used, reproduced, copied or varied, wholly or in part without written permission from an authorised Burbank representative. Copyright Burbank Australia Pty Ltd. ABN 91 007 099 872. Builders Registration Number CDB-U-52603.

Call 13 BURBANK
Visit burbank.com.au

FLOORPLAN OPTIONS



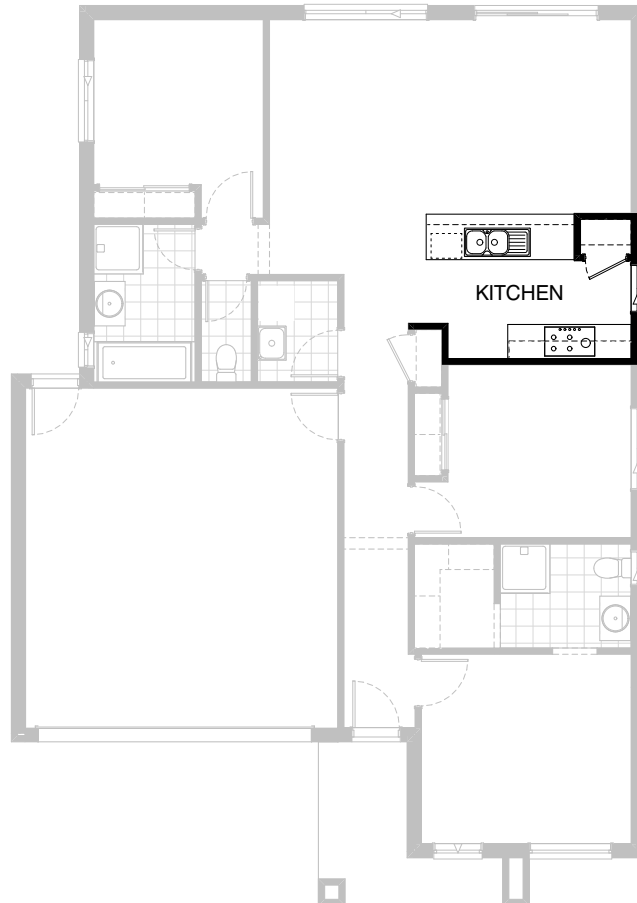
3



2



2



Option K-1

Provide Kitchen Option with MW. provision
with pot drawer in lieu of standard
1no. 600mm base cabinet.

FLOORPLAN OPTIONS



3



2



2



Option K-2

- Provide Kitchen Upgrade with 900mm cook-top and underbench oven.
- 900mm retractable rangehood within overhead cabinet in lieu of standard.
- Provide 2no. 150mm and 1no. 400mm with 2no. 20L. bin units and 1no. 900mm base cabinets, 1no. 450mm drawer unit, 1no. 800mm and 1no. 1050mm blind corner base cabinets.
- 1no. 300mm and 1no. 350mm and 1no. 400mm and 1no. 900mm overhead cabinets, 1no. 900mm blind corner overhead cabinet.
- 1no. 600mm laminated pantry unit.
- 1no. laminated DW. provision, 1no. MW. provision with pot drawer below, 1no. 900mm laminated open shelf above refrigerator space including 16mm laminated end panel
- Provide 1no. 514mm x 1930mm aluminium fixed window in lieu of standard window and additional bench top and tiled splashback to suit.

FLOORPLAN OPTIONS



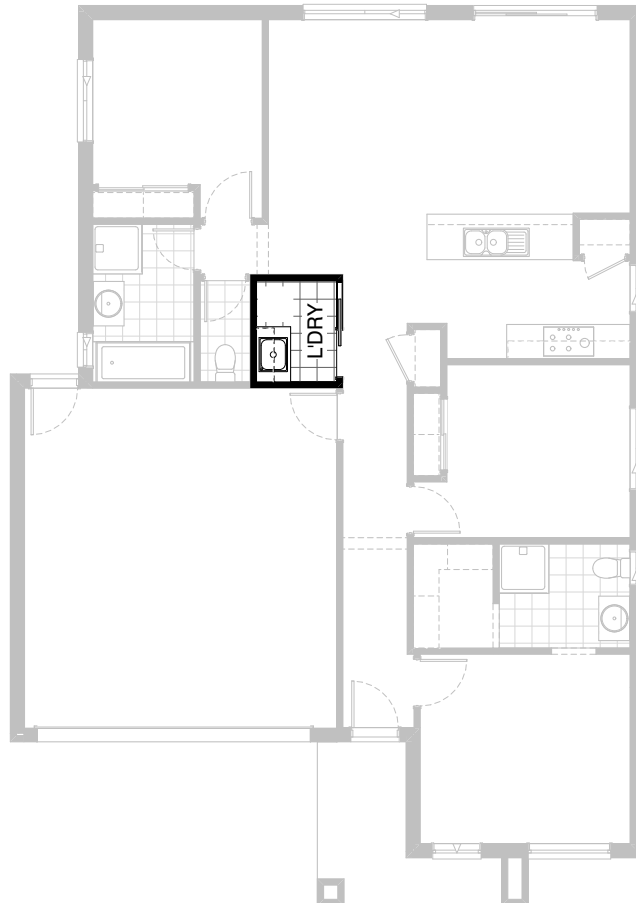
3



2



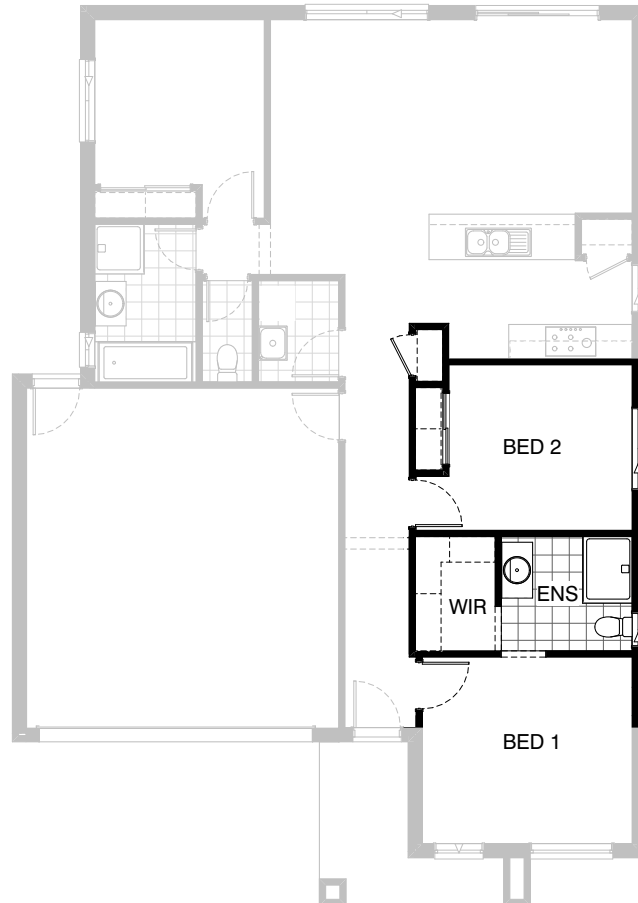
2



Option LD-1

Provide Laundry Upgrade including s.s. inset
trough in 32mm laminated bench top,
1no. 900mm base cabinet,
1no. 900mm overhead cabinet,
delete 820mm swing door and replace
with 820mm cavity sliding door
additional tiled splashback and bench top to suit.




FLOORPLAN OPTIONS



Option ENS-1

Provide Ensuite Option by increasing the length by 180mm and reducing Bed 1 length by 50mm, Bed 2 length by 60mm, Linen by 100mm Kitchen length by 50mm and Meals length by 20mm.
Delete 820mm wide door to Linen and replace with 720mm wide door
Provide additional 1no. 1200mm x 900mm polymer marble shower base in lieu of standard 900mm x 900mm polymer marble shower base and 1no. 982mm wide vanity unit in lieu of standard 1no. 782mm wide vanity unit.
Relocate Ensuite window to suit.

FLOORPLAN OPTIONS

 **3**  **2**  **2**



Option ENS-2

- Provide Ensuite Option by increasing the length by 280mm
- Reduce Bed 1 length by 50mm, Bed 2 length by 60mm & Meals area by 170mm.
- Delete 820mm wide door to Linen and replace with 720mm wide door
- Reduce Bed 2 Robe width to 1410mm wide
- Increase Ensuite width by 70mm and decrease W.I.R width by 70mm to suit.
- Adjust Kitchen & Bed 2 window over 120mm
- Provide additional 1no. 1200mm x 900mm polymarble shower base in lieu of standard 900mm x 900mm polymarble shower base and 1no. 1282mm wide vanity unit with 2 basins in lieu of standard of 1no. 782mm wide vanity unit.
- Relocate Ensuite window to suit

FLOORPLAN OPTIONS



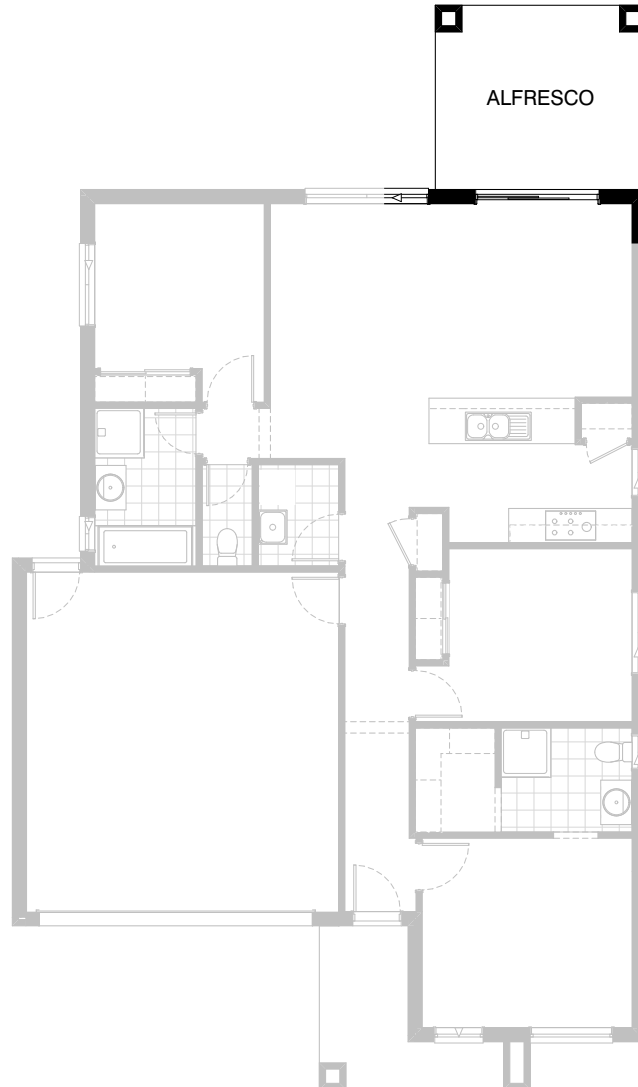
3



2



2



Option EP1-2

Provide Alfresco under dwelling roof line to rear of Meals including structural concrete floor, light point and 2no. 470mm x 470mm brick piers.
Increases area by 12.02m².
Increases length by 3240mm.

FLOORPLAN OPTIONS



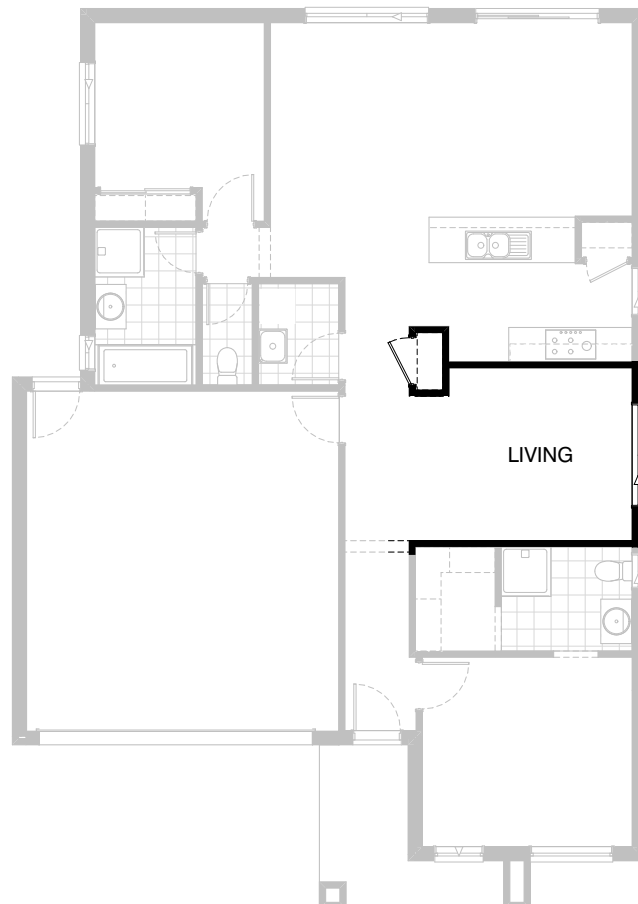
3



2



2



Option IP1-1

Delete Bed 2 and provide Living including
1no. 1800mm x 1810mm aluminium
sliding window in lieu of standard
1no. 1200mm x 1450mm aluminium
sliding window.

FLOORPLAN OPTIONS



3



2



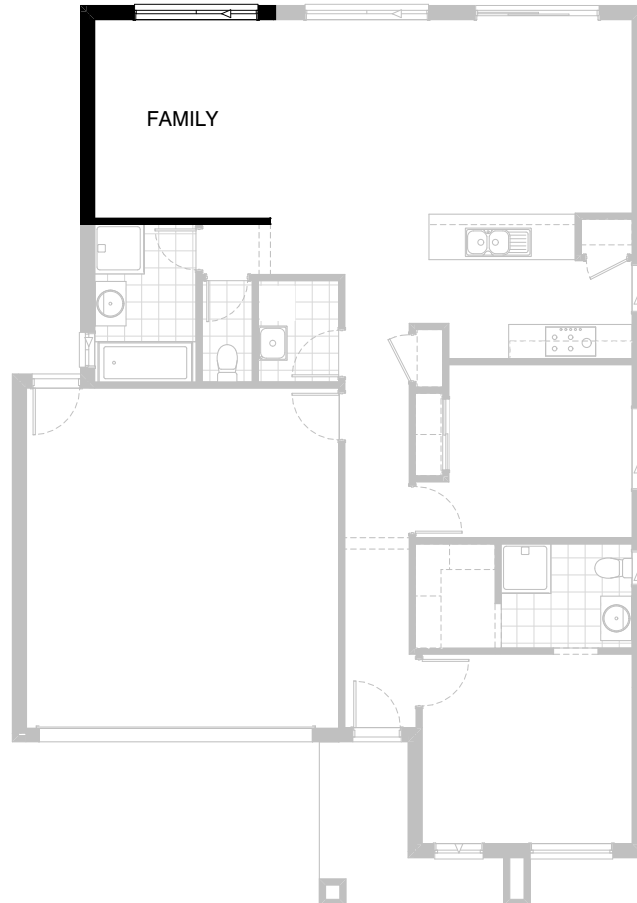
2



Option IP1-2

Delete Bed 2 and provide Living including
1no. 1800mm x 1810mm aluminium
sliding window in lieu of standard
1no. 1200mm x 1450mm aluminium
sliding window and relocate Bed 1,
Ensuite and W.I.R to suit.

FLOORPLAN OPTIONS



Option IP1-3

Extend Family room in lieu of standard Bed 3.
Provide additional 1 no. 2057mm x 2170mm
aluminium sliding window to rear wall and
delete existing 1200mm x 1450 aluminium
sliding window from side wall.
Delete 1 no. 820mm flush panel hinged door
and plaster lined site built robe.